

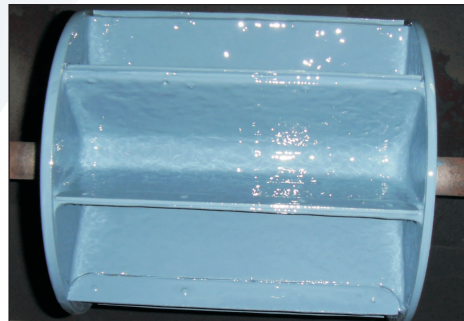
REALTECH SUPER HIGH STRENGTH EROSION & CORROSION RESISTANT PRODUCT



POLY CERAMIC COMPOUND



POLY CERAMIC LIQUID (COATING)



A company deal with saving concept



REALTECH EROSION & CORROSION RESISTANT PRODUCTS

THESE PRODUCTS ARE NON MACHINABLE CERAMIC FILLED FIBRE REINFORCED, ADHERE TO ALMOST ALL SURFACE. SPECIALLY USEFUL WHEN CORROSION AND EROSION IS ENCOUNTERED.

Salient Features :

- Versatile to repair any metal in corrosion and acidic area.
- To get optimum result these can used combined with Carbide & Microbead compound also.

Typical Application :

- Chemical pump casing, impeller, glass lined vessel's, propeller blade of a ship, acid spill over area, where erosion and corrosion is faced encountered due to acid etc.
- Used in place of rubber lining /Teflon lining to get more life, If erosion is encountered.

Physical Properties:	Poly Ceramic Compound	Brushable Ceramic Liquid
Compressive Strength	950 kg/cm ²	800 kg/cm ²
Flexural Strength	550 kg/cm ²	550 kg/cm ²
Temperature Resistant	220° C.	220° C.
Shore Hardness	>90D	>90D
Working Time	25-30 Min.	30-40 Min.
Curing Time	3-4 Hours.	4 Hours.
Coverage Area	6.5 kg/sqm.	1 kg/sqm.
Coating Thickness	2-3 mm.	0.5 mm.

Available in

Poly Ceramic Compound/ Poly Ceramic Liquid (coating) : 1 Kg. / 5 Kg. / 10 Kg.



Office : H-610, Titanium City Centre,
B/s. IOC Petrol Pump, 100 Feet Road,
Sachin Tower, Satellite, Ahmedabad-380 015.

Regd. Off. :A/74, Ekta Tower,
Vasna Barage Road,
Vasna, Ahmedabad-380 007.

Ph.: (O) 08866499777 M.: 9426075044, 9426511321.
E-mail: info@hitechcorporation.com Web.: www.hitechcorporation.com