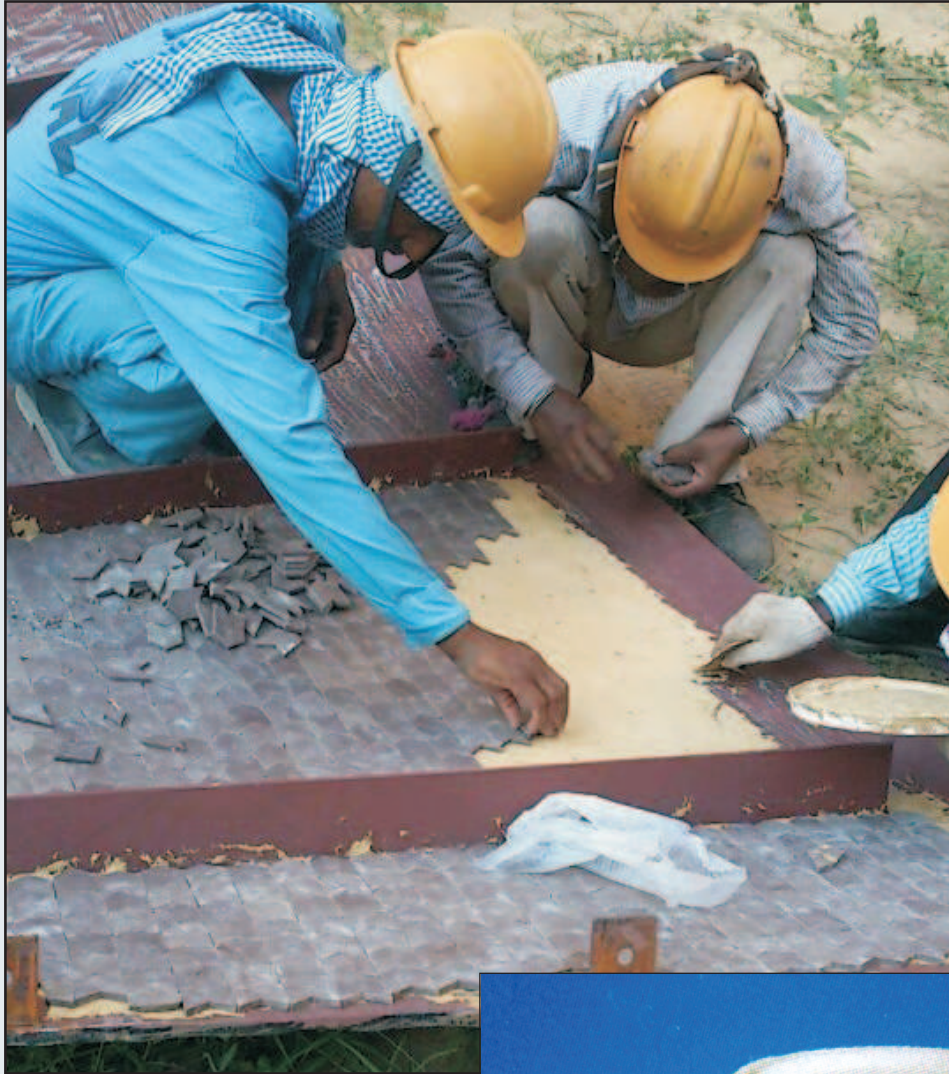


REALTECH SUPER HIGH STRENGTH REALBOND (CERABOND) TILES ADHESIVE COMPOUND



A company deal with saving concept



REALTECH REALBOND (CERABOND) TILES ADHESIVE COMPOUND

Introduction:

Ceramic is High value item and it is very brittle under impact. To bond ceramic with the steel plate normally one use mortar which has very poor bonding strength with the steel plate and concrete. Real Bond Ceramic Bonding Material is Two Part System which gets polymerized and bond nearly any metal, concrete with the ceramic, glass, wood etc with very high strength.

Features & Benefits:

- Ceramic filled and hence have nearly the same property of parent material.
- Superior adhesion to almost all clean surfaces.
- Protection against corrosion, abrasion etc.
- Gets cured in short time and increases the work output.

Physical Properties:		CERABOND
Alumina Content	:	80% minimum.
Compressive strength	:	1500kg/cm ²
Flexural strength	:	350kg/cm ²
Tensile shear strength	:	170kg/cm ²
Hardness Shore D.	:	95D.
Max. Operating Temp C.	:	180 to 200 deg.C
Working time 30 deg. C.	:	30 to 40 minutes.
Kit Size.	:	10 & 30 kgs.
Coverage.	:	4 kg/M2 WITH 3MM THK

Available In

Realbond (Cerabond) Tiles Adhesive Compound : 10 Kg. / 15 Kg.



Office : H-610, Titanium City Centre, B/s. IOC Petrol Pump, 100 Feet Road, Sachin Tower, Satellite, Ahmedabad-380 015. Regd. Off. :A/74, Ekta Tower, Vasna Barage Road, Vasna, Ahmedabad-380 007.

Ph.: (O) 08866499777 M.: 9426075044, 9426511321.
E-mail: info@hitechcorporation.com Web.: www.hitechcorporation.com